

EVERFILT VALVE MANUAL & PARTS LIST

Disassembly

1. Remove the (8) bolts holding the actuator lid in place. *(See Fig. 1)*
2. Remove the (3) bolts holding the actuator housing in place. *(See Fig. 2)*
3. Remove the actuator housing, by sliding it up over the piston assembly. *(See Fig. 3)*
4. Remove the bolt in the center of the piston and remove the diaphragm disc and the diaphragm. *(See Fig. 4)*

NOTE: See the cloth-like appearance of the outside of the diaphragm. The diaphragm must be installed with the cloth-like side in this position, otherwise premature failure will result.

5. Push down on the piston assembly and insert vice-grip pliers in to the tank connection of the backwash valve. Clamp onto the collar of the valve shaft firmly. *(See Fig. 5)*
6. While holding the vice grips, loosen jam nut under the piston and unthread the piston. Remove the jam nut. *(See Fig. 6)*
7. Again, while holding the vice grips, loosen and remove the (2) jam nuts holding the valve plates. *(See Fig. 7)*
8. Remove the vice grips and push the valve shaft up into the valve.
9. Remove the bottom plate, the valve seal, the o-ring and the top valve plate through the tank connection of the backwash valve. *(See Fig. 8)*
10. Carefully, pull the valve shaft out of the valve inlet opening. *(See Fig. 9)*
11. Use a small screwdriver to remove the (2) o-rings, located in the packing gland in the top of the valve. *(See Fig. 10)*
12. The valve is now fully disassembled. *(See Fig. 11)*

Inspection

1. Inspect the epoxy coated valve body and valve plates for chipped epoxy surfaces and corroded areas. Replace if necessary.
2. Inspect the valve shaft and packing gland for galling. Replace if necessary.
3. Inspect the diaphragm carefully inside and out, for wear or cuts. Replace if necessary.
4. It is recommended that the valve seal and o-rings be replaced each time the valve is disassembled.



**Is Your
Backwash
Valve
Operating
Optimally?**

Contact Everfilt,[®]
For a Valve
Rebuild Kit Now.



Reassembly – TP226

1. Coat the inside of the packing gland with moly-disulfide grease before installing the (2) o-rings.
2. Install the (2) o-rings in the packing gland.
3. Coat the inside of the packing gland with Chevron Waterproof Grease.
4. Carefully, push the valve shaft through the packing gland.
5. Apply a small amount of RTV silicone to the small recess in the top of the top valve plate and place on the the valve shaft.
6. Place the o-ring on the valve shaft.
7. Place the valve seal on the shaft.
8. Place the bottom plate on the shaft, the raised shoulder with the recess will center the valve seal and seal against the o-ring.
9. Again, use the vice grips to grip the shaft collar and install the two jam nuts. Tighten the first one against the plate, then tighten the second up against the first nut, to lock it in place.
10. Place the jam nut on the other end of the shaft, along with the spring.
11. Thread the piston on the shaft.
12. Place the cloth-side of the diaphragm against the top piston surface.

NOTE: Contact Everfilt Customer Service For Any Issues In Disassembly or Reassembly.

13. Place the disc in the center of the piston. Apply a small amount of Teflon paste to disc retainer bolt and thread it through the hole in the disc to retain the diaphragm.
14. Place the actuator housing next to this piston.
15. Adjust the piston height by threading it up or down on the shaft.
16. The disc retainer bolt on the piston should be 1/8 in. to 1/4 in. below the top edge of the actuator housing.
17. Tighten the jam nut against the bottom of the piston.
18. Pull the diaphragm down over the piston, then bring it back up to form a fold, so that the flanged portion of the diaphragm is even with the piston surface.
19. Carefully, slide the actuator housing down over the diaphragm.
20. Bolt the actuator to the top of the valve body with the (3) bolts removed earlier.
21. Carefully, rotate the piston to align the diaphragm bolt holes with the holes in the top of the actuator housing flange.
22. Bolt the lid to the actuator housing with the bolts removed earlier. Note the 1/4 in. drain plug in the actuator lid should be located at the bottom of the lid, when the valve is mounted on the filter.



**Is Your
Backwash
Valve
Operating
Optimally?**

Contact Everfilt,[®]
For a Valve
Rebuild Kit Now.

Rebuilding Instructions

TOOLS REQUIRED

- (2) 7/16 In. Combination Wrenches
- (2) 9/16 In. Combination Wrenches
- (1) 3/4 In. Combination Wrench
- (1) Pair of Vice Grip Pliers
- (1) Small Straight Screwdriver

Fig. 1 REMOVE ACTUATOR LID

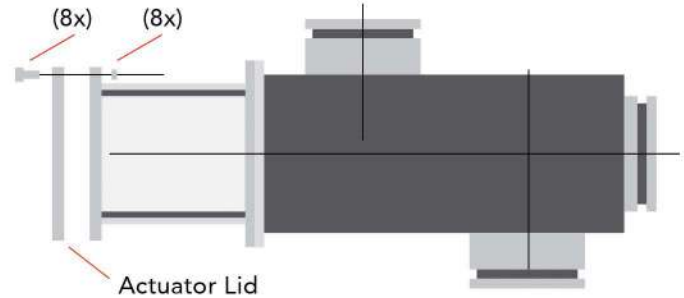


Fig. 2 REMOVE ACTUATOR HOUSING BOLTS

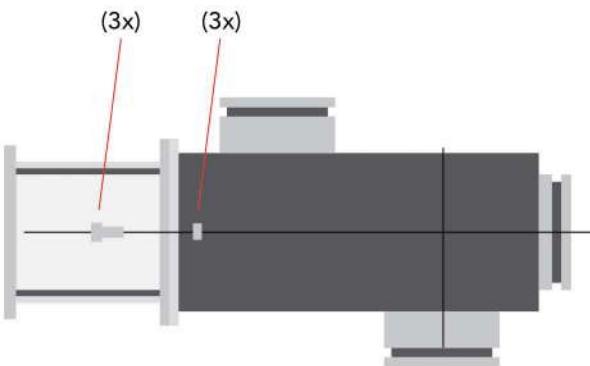


Fig. 3 REMOVE ACTUATOR HOUSING

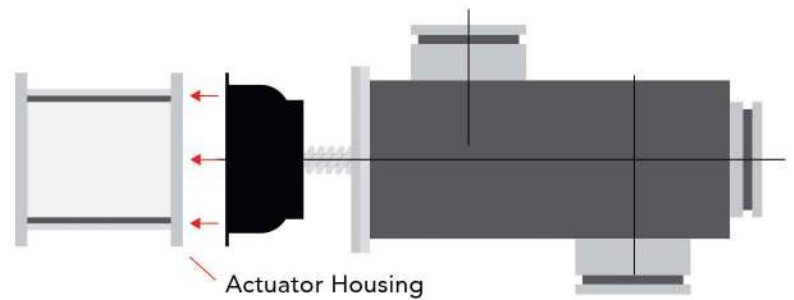


Fig. 4 REMOVE BOLT & DIAPHRAGM DISC

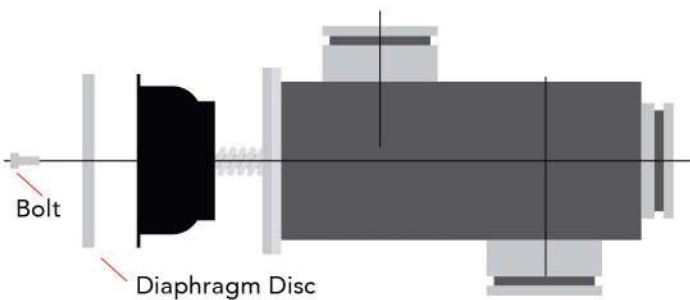
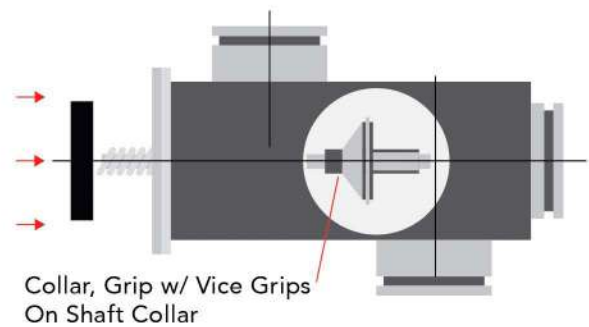


Fig. 5 CLAMP COLLAR OF VALVE SHAFT W/ VICE GRIPS



Rebuilding Instructions

TOOLS REQUIRED

- (2) 7/6 In. Combination Wrenches
- (2) 9/16 In. Combination Wrenches
- (1) 3/4 In. Combination Wrench
- (1) Pair of Vice Grip Pliers
- (1) Small Straight Screwdriver

Fig. 6 REMOVE PISTON, SPRING & JAM NUT

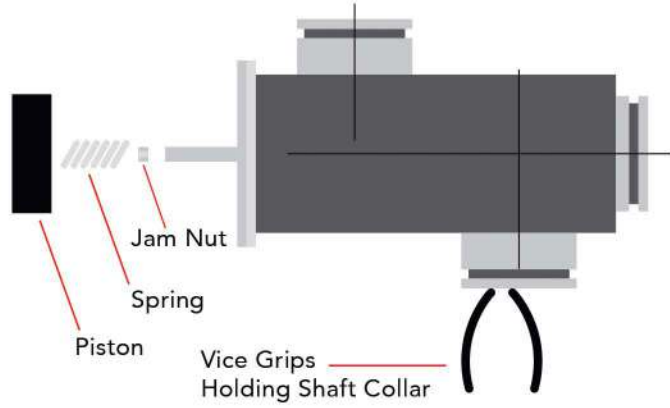


Fig. 7 REMOVE JAM NUTS ON SHAFT

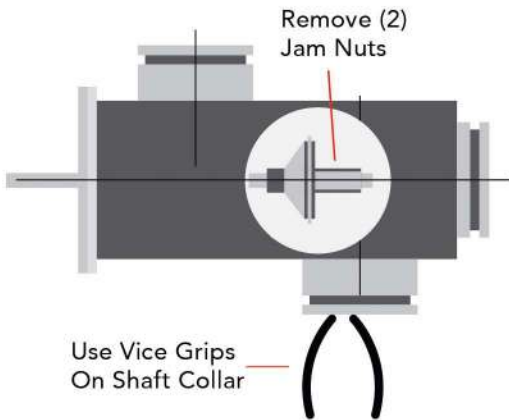


Fig. 8 REMOVE BTM VALVE PLATE, SEAL, O-RING & TOP PLATE

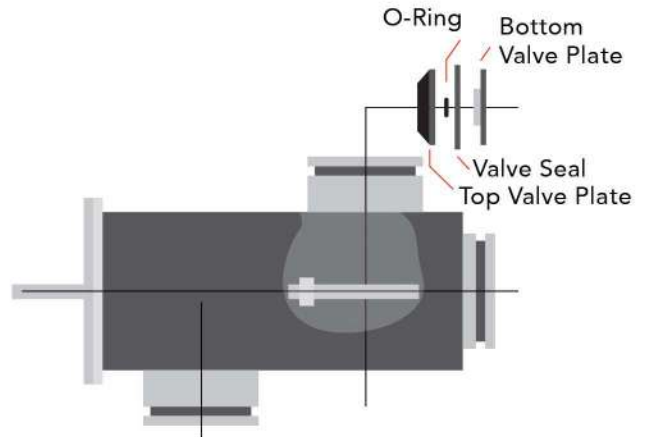


Fig. 9 REMOVE VALVE SHAFT

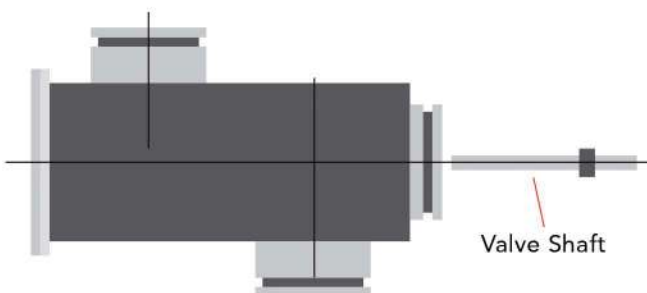


Fig. 10 REMOVE O-RINGS IN PACKING GLAND

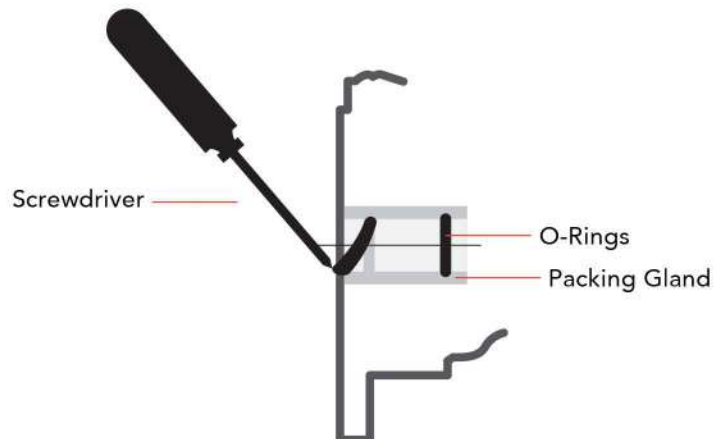


Fig. 11 BACKWASH VALVE EXPLODED VIEW

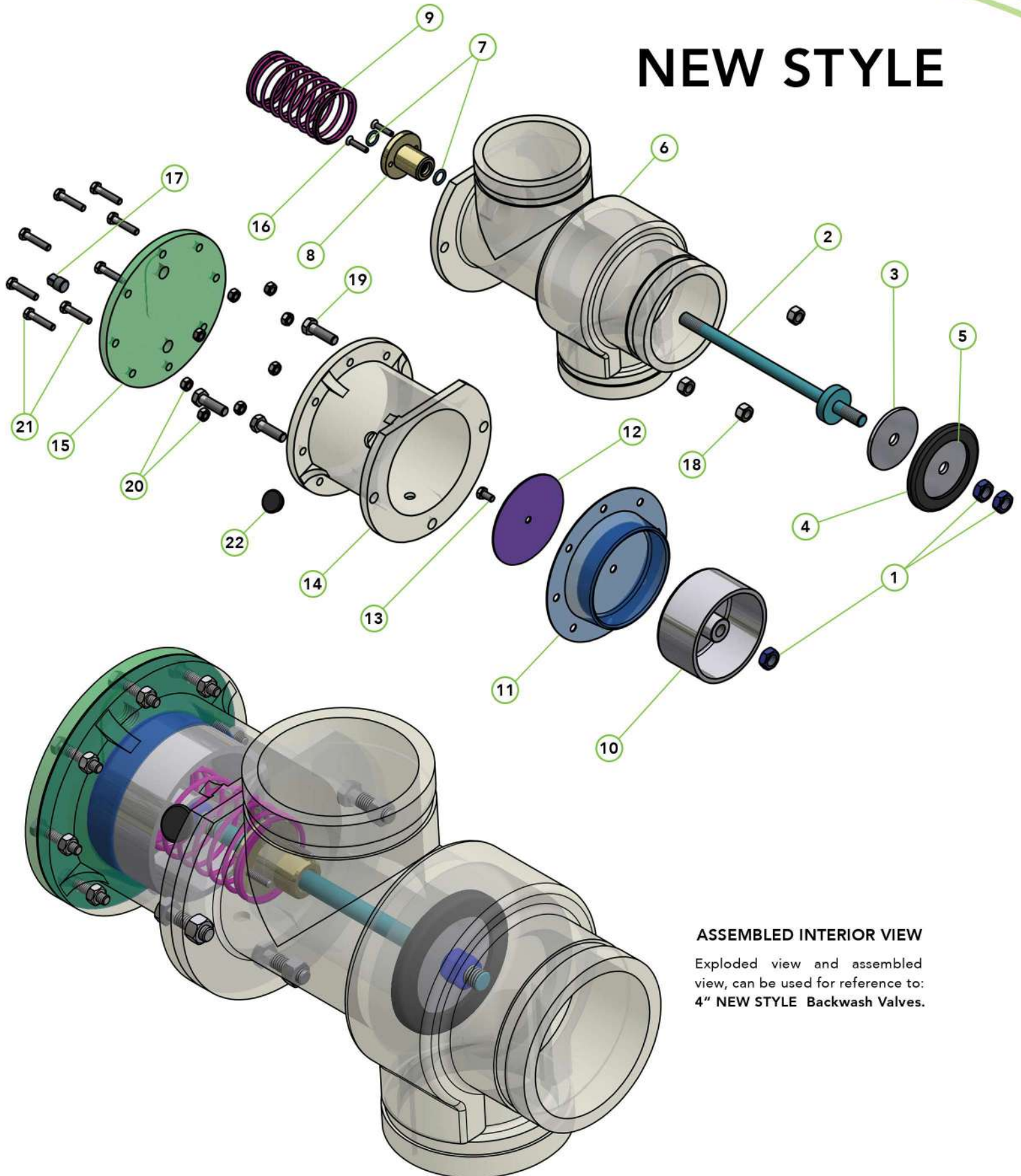
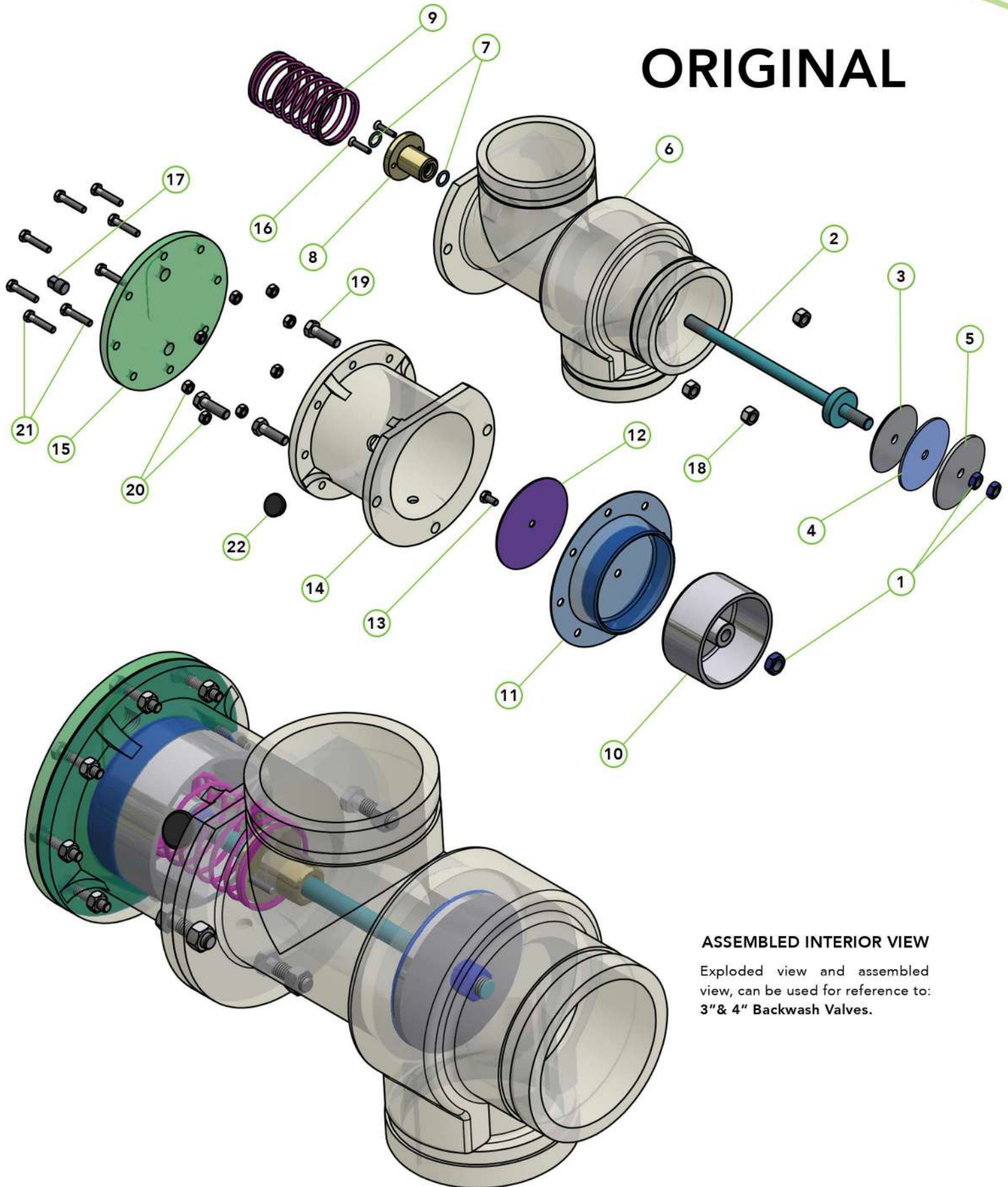


Fig. 11 BACKWASH VALVE EXPLODED VIEW



ORIGINAL

ASSEMBLED INTERIOR VIEW

Exploded view and assembled view, can be used for reference to: 3" & 4" Backwash Valves.

Everfilt Automatic Cast Valve Parts List

The Everfilt Valve Parts List highlights all the essential parts you need to get your Backwash Valve back in working order and ensure repairs can be done easily by you, whenever you need to. Reference this list for needed parts.

Contact Everfilt for Any Questions Regarding Your Rebuild Kit.



	DESCRIPTION	3" Part No.	4" Part No.	4" (New Style) Part No.	QTY
1.	JAM NUT, 1/2 - 13 THREAD 304SS	1069	1069	1069	3
2.	BACKWASH SHAFT ASSEMBLY	3018-01	3018-05	3018-05	1
3.	BOTTOM VALVE PLATE	2117-02	2117-04	—	1
4.	SEAL VALVES (3", 4", 4" NEW STYLE)	1065-05	1065-06	1065-07	1
5.	TOP VALVE PLATE	2117-01	2117-03	2117-07	1
6.	CAST VALVE BODY	3020-03	3020-04	T-105-B	1
7.	O-RING 3-112 NO674-70	1066	1066	1066	2
8.	DELFIN GLAND PACKING	1269-02	1269-02	1269-02	1
9.	VALVE SPRING 4" VALVE, 2-1/4"X5"	1070	1070	1070	1
10.	PISTON	2034	2034	2034	1
11.	DIAPHRAGM	1059	1059	1059	1
12.	ACTUATOR DISC 304SS	2032	2032	2032	1
13.	CAP SCREW 1/4"- 20 THD X 1 1/4: 304SS	1074	1074	1074	1
14.	ACTUATOR HOUSING	2035	2035	2035	1
15.	ACTUATOR COVER	2033	2033	2033	1
16.	10-32X.875 SS FLAT-HEAD SCKT CAP SCREW	1272-01	1272-01	1272-01	2
17.	1/4" PIPE PLUG GALVANIZED SQ HEAD	1078	1078	1078	1
18.	3/8"- 24 HEX NUT ZP	1072	1072	1072	3
19.	3/8"- 24X1.25 STEEL HEX HEAD BOLT	1071	1071	1071	3
20.	1/4"- 20 HEX NUT ZP	1073	1073	1073	8
21.	1/4"- 20X1.25 STEEL HEX HEAD BOLT ZP	1077	1077	1077	8
22.	GROMMET 60 DURO / EPDM BLACK	1079	1079	1079	2
23.	REBUILD KIT	4066-03	4066-04	4066-05	1
24.	VALVE BODY HIGH-PRESSURE	—	3012-02	—	1

Packing Gland Lubrication – TP257

1. DELRIN PACKING GLAND (BLACK)

FOR BLACK DELRIN PACKING GLAND - USE ONLY THE **WHITE** SILICONE-BASED GREASE SUPPLIED. PETROLEUM BASED GREASES OR LUBRICANTS WILL DAMAGE THE PART.

*DELRIN PLASTIC IS HIGHLY DURABLE, THINNER AND LIGHTER. IT HAS HIGH FATIGUE RESISTANCE, HIGH CREEP RESISTANCE AND HIGH TENSILE STRENGTH.

Packing Gland Lubrication – TP257

2. SS PACKING GLAND (HIGH-PRESSURE VALVES)

TWO TYPES OF GREASE ARE USED TO PROVIDE LUBRICATION FOR THE SS PACKING GLANDS. A RED WATERPROOF GREASE AND A GRAY MOLY-DISULFIDE GREASE ARE SUPPLIED WITH THE KIT.

*THE GRAY GREASE SHOULD BE APPLIED TO THE O-RING GROOVES AND O-RINGS. THE RED GREASE SHOULD THEN BE APPLIED TO THE INTERIOR OF THE PACKING GLAND AND MIXED INTO THE GRAY GREASE.



Packing Gland Lubricants



**Is Your
Backwash
Valve
Operating
Optimally?**

Contact Everfilt,
For a Valve
Rebuild Kit Now.



**Protect Productivity & Profits
with an Everfilt® Filtration System.**

Everfilt manufactures complete systems and individual components to meet your demands. Providing solutions that deliver cost-effective alternatives, along with custom replacement options.