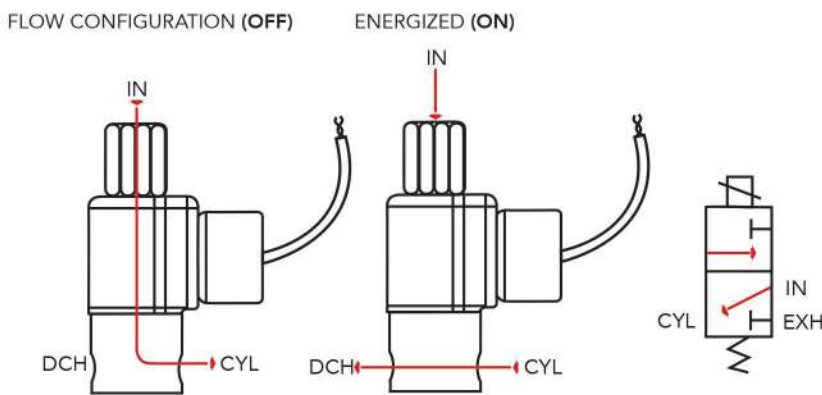


Solenoid Series 20 — Model 23

3-Way Normally Closed Valve (exhaust to atmosphere): A complete line of valves with a great selection of options and exceptional performance. The standard in the field of air, water and other fluids, compatible with standard Buna seals. Hot water, steam, gasoline and many oils require special seal materials.



Characteristics

1. The flagship valve initially created for fluid power industry.
2. Heavy duty — stainless steel.
3. A real workhorse with proven performance.
4. Greatest amount of options available, of all the valves.
5. Wide range of orifice sizes from: 1/32" to 1/4".

VALVE SPECS <small>+ MAX. OPER. PRESS. DIFF.</small>		Orifice Size		CV Factor		Valve Number Grommet Housing		Conduit Housing	
AC	DC	N.C.	N.O.	N.C.	N.O.	1/8 NPT Ports	1/4 NPT Ports	1/8 NPT Ports	1/4 NPT Ports
400	400	1/32	1/32	.024	.024	23GG7DGM	23GG9DGM	23GG7DCM	23GG9DCM
150 ⁽²⁰⁰⁾	150 ⁽²⁰⁰⁾	3/64	1/16	.052	.095	23HJ7DGM	23HJ9DGM	23HJ7DCM	23HJ9DCM
100 ⁽¹³⁵⁾	100 ⁽¹³⁵⁾	1/16	1/16	.095	.095	23JJ7DGM	23JJ9DGM	23JJ7DCM	23JJ9DCM
100 ⁽¹³⁵⁾	100 ⁽¹³⁵⁾	1/16	3/32	.095	.156	23JK7DGM	23JK9DGM	23JK7DCM	23JK9DCM
75 ⁽¹⁰⁰⁾	75 ⁽¹⁰⁰⁾	3/32	3/32	.156	.156	23KK7DGM	23KK9DGM	23KK7DCM	23KK9DCM
50 ⁽⁷⁰⁾	50 ⁽⁷⁰⁾	1/8	3/32	.284	.156	23NK7DGM	23NK9DGM	23NK7DCM	23NK9DCM
35 ⁽⁴⁰⁾	35 ⁽⁴⁰⁾	1/8	1/8	.284	.201	23NN7DGM [^]	23NN9DGM [^]	23NN7DCM [^]	23NN9DCM [^]
20	20	3/16	3/32	.500	.156	23PK7DGM	23PK9DGM	23PK7DCM	23PK9DCM
20	20	3/16	1/8	.500	.201	23PN7DGM [^]	23PN9DGM [^]	23PN7DCM [^]	23PN9DCM [^]
15	—	1/4	3/32	.700	.156	23RK7DGM	23RK9DGM	23RK7DCM	23RK9DCM
15	—	1/4	1/8	.700	.201	23RN7DGM [^]	23RN9DGM [^]	23RN7DCM [^]	23RN9DCM [^]

[^] VALVES WITH 1/8 N.O. ORIFICE ARE UL LISTED ONLY WHEN ORDERING VALVES OR REPAIR PACKS ADD VOLTAGE AND FREQUENCY TO COMPLETE VALVE NUMBER. EXAMPLES: VALVE (23JK9DGM-120/60) REPAIR PACK (K23JKD-AC)
+ Ratings in brackets are optional extended ratings; consult factory.



Solenoid Series 20 — Model 23 (continued)

Operating Conditions

MEDIA:	Air, water and other fluids compatible with standard Buna seals. Hot water, steam, gasoline and many oils require special seal materials. (Series 20 pressure ratings may change due to the viscosity of the liquid.)*
VALVE TEMP RANGE:	Standard Valves - 0°F (-18°C) to 104°F (40°C) ambient; 0°F (-18°C) to 150°F (65°C) media. Optional valves can tolerate much higher or lower ambient and media temperatures.
MAX OPD: (operating pressure differential)	See table on page 1.
BURST PRESSURE:	5000 PSI.
LEAKAGE:	Bubble tight for standard valves.
VACCUM:	To 5 microns.



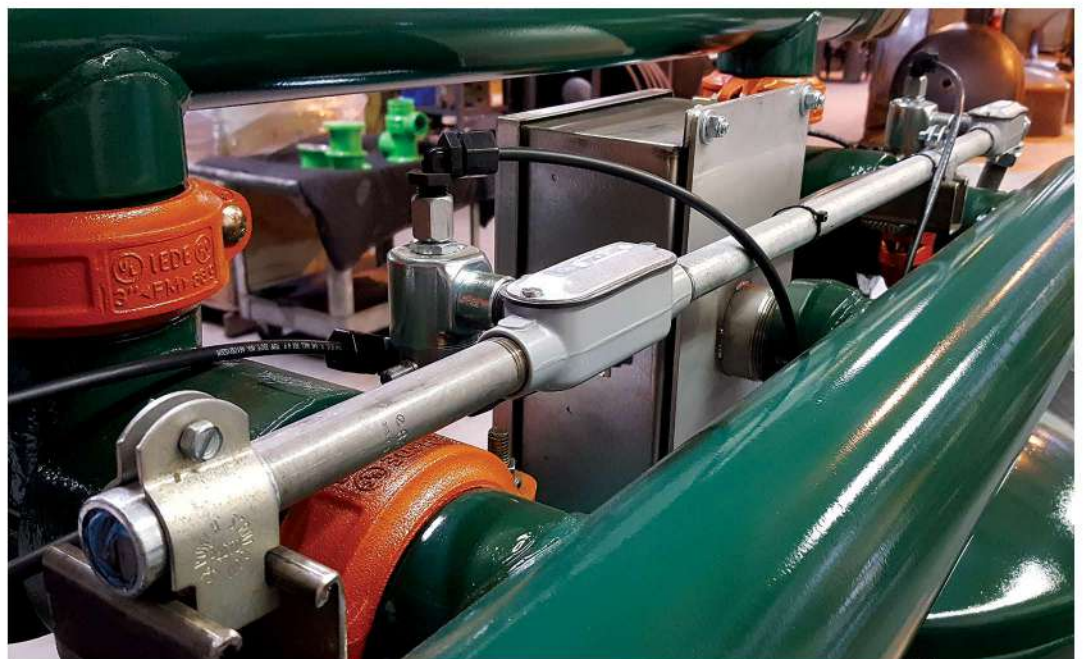
Mechanical

- 1. Body:** Stainless steel (Std.) or (Opt.)
- 2. Internal Components:** Stainless steel
- 3. Elastomers:** Nitrile (Buna) (Std.). Many other elastomers available*
- 4. Orifice Diameter:** See table on Page 1
- 5. Porting:** Standard 1/8" and 1/4" NPT (other ports available)
- 6. Housing:** Grommet and 1/2" NPT conduit - many options available*
- 7. Listings:** Most valves are UL and CSA listed.*
- 8. Life Expectancy:** Millions of cycles, depending on application, lubrication, etc.
- 9. Valve Weight:** Grommet Valve - 1.06 lb. Conduit Valve - 1.13 lb.
- 10. Repair Packs:** See table on Page 1
- 9. Options:** Alternate port locations, Metering, Manual Override, Alternate Elastomers, Spade Terminal Coil, European Style DIN, Explosion Proof and Magnetic Latching Coil

* Consult representative or factory for options and specifications

Electrical

- 1. Coil Voltage:** 6 to 825 VAC 60 Hz and 5 to 720 VAC 50Hz, — 1.8 to 265 VDC
- 2. Nominal Power:** AC - 8.7 Watts DC - 9.5 Watts
- 3. Coil Construction:** Molded (Std.), Non-molded Class A and Potted Class F or Class H (Opt.)
- 4. Operating Speed:** Up to 600 CPM
- 5. Duty Cycle:** Continuous



Protect productivity and profits with an Everfilt® filtration system.