

RELIABLE. RUGGED. READY FOR THE FIELD.

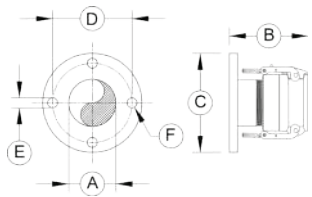
Simplify your piping transitions with the **Everfilt® Carbon Steel & Stainless Steel Pipe Conversion Adapters** — engineered for rapid, secure flange-to-grooved system connections and cam-lock needs, without sacrificing strength or reliability.



EVERFILT® FLANGE-TO-ALUMINUM CAM-LOCK CONVERSION ADAPTERS

Engineered for tough jobs, these rugged Carbon Steel or Stainless Steel adapters ensure fast, secure transitions from flange to aluminum cam-lock connections—built for performance, durability, and wfield-ready efficiency.

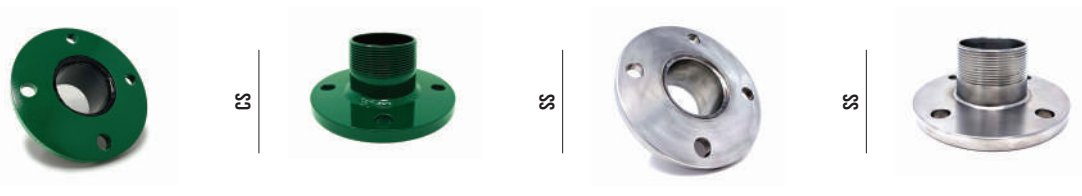
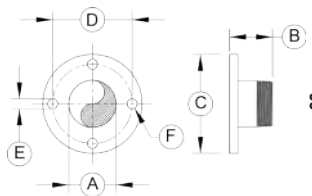
PART DESCRIPTION	PN CS	PN SS	A / SIZE	B / LENGTH	C / WIDTH	D / BOLT CIRCLE	E / BOLT HOLE DIA.	F / NUMBER OF BOLTS
FLANGE TO ALUMINUM CAM-LOCK ADAPTER	FAB-PRT-1000-03	FAB-PRT-1001-03	3"	5.98"	7.50"	6.00"	0.75"	4
	FAB-PRT-1000-04	FAB-PRT-1001-04	4"	7.31"	9.00"	7.50"	0.75"	8
	FAB-PRT-1000-06	FAB-PRT-1001-06	6"	7.69"	11.00"	9.50"	0.88"	8



EVERFILT® FLANGE-TO-NPT CONVERSION ADAPTERS

Designed for speed and strength, these Carbon Steel or Stainless Steel adapters provide secure, seamless transitions from flanged pipe systems to FPT connections—rugged, precise, and built for the field.

PART DESCRIPTION	PN CS	PN SS	A / SIZE	B / LENGTH	C / WIDTH	D / BOLT CIRCLE	E / BOLT HOLE DIA.	F / NUMBER OF BOLTS
FLANGE TO NPT ADAPTER	FAB-PRT-1002-03	FAB-PRT-1003-03	3"	3.25"	7.50"	6.00"	0.75"	4
	FAB-PRT-1002-04	FAB-PRT-1003-04	4"	4.25"	9.00"	7.50"	0.75"	8
	FAB-PRT-1002-06	FAB-PRT-1003-06	6"	4.25"	11.00"	9.50"	0.88"	8



EVERFILT® FLANGE-TO-GROOVED CONVERSION ADAPTERS

Built for efficiency and durability, these high-strength adapters—available in Carbon Steel or Stainless Steel—deliver fast, secure transitions from flanged pipe systems to grooved Vic-style connections with field-proven reliability.

PART DESCRIPTION	PN CS	PN SS	A / SIZE	B / LENGTH	C / WIDTH	D / BOLT CIRCLE	E / BOLT HOLE DIA.	F / NUMBER OF BOLTS
FLANGE TO GROOVE ADAPTER	FAB-PRT-1004-03	FAB-PRT-1005-03	3"	4.25"	7.50"	6.00"	0.75"	4
	FAB-PRT-1004-04	FAB-PRT-1005-04	4"	4.25"	9.00"	7.50"	0.75"	8
	FAB-PRT-1004-06	FAB-PRT-1005-06	6"	4.25"	11.00"	9.50"	0.88"	8

