

RST-Flow Restrictor Tube (Carbon Steel)

PN-1291-4

The carbon steel restrictor tube is a compact and easily installed multi-purpose device, that combines the benefits of a restrictor valve, air vent port and sight glass into one compact assembly. This unit also provides protection against accidental adjustment which can cause filter damage or filter media loss.

The unit comes with 4" grooved ends for quick installation and is easily removed for inspection. The hex nut adjustment helps protect against unauthorized adjustment. The carbon steel construction provides durability from the elements and does not require painting.





RST-Flow Restrictor Tube (Carbon Steel)

DESCRIPTION	PART#	I.D	LENGTH	O.D
RST-Flow Restrictor Tube CS	1291-04	4"	16"	4.5"

Optional Equipment

DESCRIPTION	PART#	CON. DIA	THREAD	HEIGHT	WIDTH
AIR/VAC Relief Valve	1284-03	2"	FPT	9.6"	3.3"

DESCRIPTION	PART#	O.D	THREAD
Nipple 2" x Close PVC SCH 80	1281-05	2"	MPT

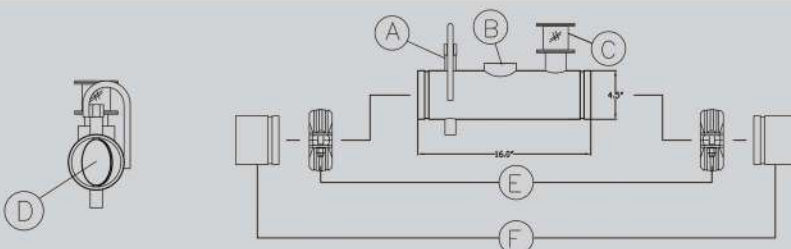
DESCRIPTION	PART#	I.D
Grooved Coupling	1007-03	4"



Features

1. Provides a restrictor valve, air vac relief valve port and sight glass into one compact unit.
2. Helps protects against unauthorized adjustment. Requires a wrench for adjustment.
3. Carbon steel construction, with custom paint finishes.
4. Eliminates the use of an expensive gate valve which can move out of adjustment.
5. Provides a 2" FPT port, for use of a vacuum relief valve (optional).
6. Replacement sight glass lenses and gaskets are available.

*Please Contact a Sales Representative For Details



EQUIPMENT LIST		OPTIONS		QTY.
ITEM	DESCRIPTION	ITEM	DESCRIPTION	
A	ADJUSTING HEX	E	P/N 1007-03 4" GROOVED CPLG.	2
B	2" FPT	F	P/N 2011-12 4" PVC ADAPTER	2
C	SIGHTGLASS			
D	RESTRICTOR PLATE			

RST-Flow Restrictor Tube (Stainless Steel) **PN-1291-3**

The stainless steel restrictor tube is a compact and easily installed multi-purpose device, that combines the benefits of a restrictor valve, air vent port and sight glass into one compact assembly. This unit also provides protection against accidental adjustment which can cause filter damage or filter media loss.

The unit comes with 4" grooved ends for quick installation and is easily removed for inspection. The hex nut adjustment helps protect against unauthorized adjustment. The stainless steel construction provides durability from the elements and does not require painting.





RST-Flow Restrictor Tube (Stainless Steel)

DESCRIPTION	PART#	I.D	LENGTH	O.D
RST-Flow Restrictor Tube	1291-03	4"	16"	4.5"

Optional Equipment

DESCRIPTION	PART#	CON. DIA	THREAD	HEIGHT	WIDTH
AIR/VAC Relief Valve	1284-03	2"	FPT	9.6"	3.3"

DESCRIPTION	PART#	O.D	THREAD
Nipple 2" x Close PVC SCH 80	1281-05	2"	MPT

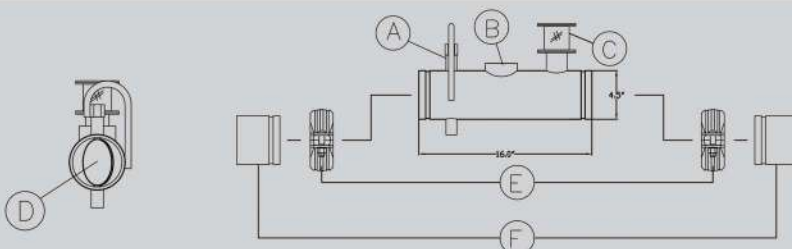
DESCRIPTION	PART#	I.D
Grooved Coupling	1007-03	4"

Features

1. Provides a restrictor valve, air vac relief valve port and sight glass into one compact unit.
2. Helps protects against unauthorized adjustment. Requires a wrench for adjustment.
3. Stainless steel construction.
4. Eliminates the use of an expensive gate valve which can move out of adjustment.
5. Provides a 2" FPT port, for use of a vacuum relief valve (optional).
6. Replacement sight glass lenses and gaskets are available.



*Please Contact a Sales Representative For Details



EQUIPMENT LIST		OPTIONS		QTY.
ITEM	DESCRIPTION	ITEM	DESCRIPTION	
A	ADJUSTING HEX	E	P/N 1007-03 4" GROOVED CPLG.	2
B	2" FPT	F	P/N 2011-12 4" PVC ADAPTER	2
C	SIGHTGLASS			
D	RESTRICTOR PLATE			